

wILSW^{•••••}worldshorts

What We Do

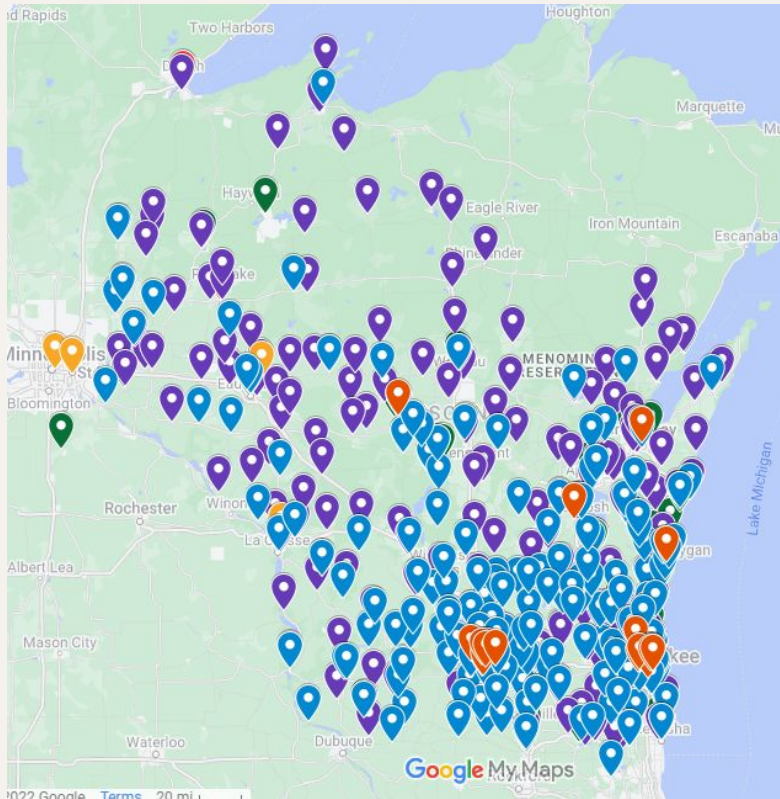


Our Mission

We believe libraries, cultural institutions, and their partners
make the world a better place.

We build relationships and provide services so they can
do more with their time and money.

We help our members
turn ideas into action.



Our Community

- 600+ members
- All types of libraries
- Museums, historical societies, & other cultural organizations
- Statewide & national consortia
- Peer organizations & vendor partners

Our Services

<https://wils.org>



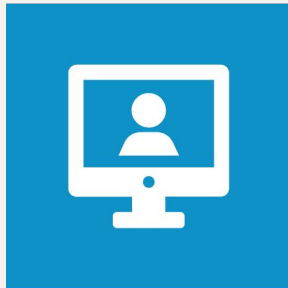
Collaboration
Support



Consulting
Services



Cooperative
Purchasing



Digital
Projects



Events
Management



Giving
Back

Our Services

<https://wils.org>



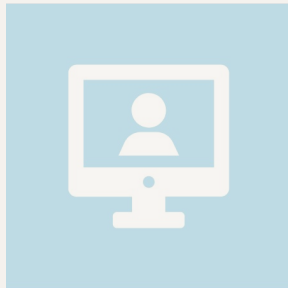
Collaboration
Support



Consulting
Services



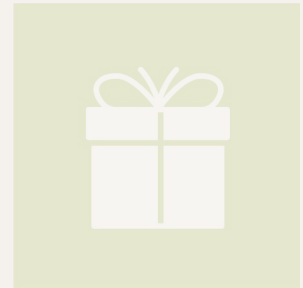
Cooperative
Purchasing



Digital
Projects



Events
Management



Giving
Back

Collaboration Support



Collaboration Support

WiLS manages statewide and national consortia and other collaborative endeavors. We provide them with project and financial management, governance and meeting support, communication, and research can activate nearly any community of practice on a wide variety of projects, from single-task workgroups to large-scale, ongoing collaborations.

Collaboration Support: The Team



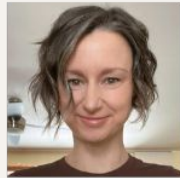
Jeff Brunner



Jennifer Chamberlain



Melody Clark



Andi Coffin



Laura Damon-Moore



Kelsie Flack



Sara Gold



Erin F.H. Huges



Kim Kiesewetter



Tom Klement



Lisa Marten



Melissa McLimans



Emily Pfothenauer



Rebecca Rosenstiel



Nick Smith



Kristen Whitson

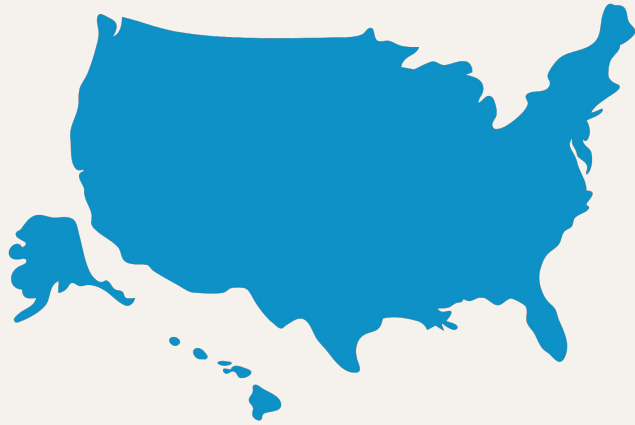


Collaboration Support: The Services



- Helping groups reach common goals
- Managing money and budgets
- Facilitating planning and goal-setting
- Relationship and partnership building
- Providing and distilling research
- Coordinating meetings and governance

Collaboration Support: The Projects



Horticulture Library Consortium
IMLS Community Memory Cohorts



ALA LTC Upper Midwest Hub

Collaboration Support: The Projects



Wisconsin Public Library Consortium (WPLC): <https://wplc.info/>

Wisconsin Schools Digital Library Consortium (WSDLC):
<https://wsdlc.org/>

WISPALS: <https://www.wispals.org/>

WISCAL: <https://wiscal.overdrive.com/>

City Library Collective: <https://citylibrarycollective.org/>

Recollection Wisconsin: <https://recollectionwisconsin.org/>

Digital Readiness Community of Practice:
<https://recollectionwisconsin.org/cop>

Consulting Services

WiLS has the experts to guide you to the answers you need. We are project management and process development pros who listen to your needs to create a reliable process, whether it is strategic planning, survey development, or an idea you've had for a long time, but don't know where to start.



**Consulting
Services**

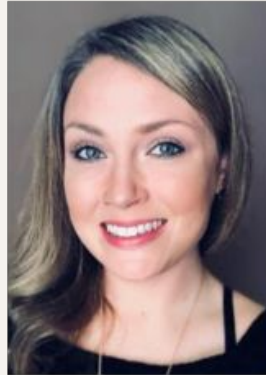
Consulting Services: The Team



Consulting
Services



Laura



Kim



Melissa



Kristen

Consulting: Needs Based

- **Co-designed processes**
- **Outcomes and goal-driven**
- **Examples**
 - Staffing plan horizons and report
 - Staff in-service days
 - Strategic planning “Phase 0”



Consulting: Research and Data Services

- **Evaluation and Assessment Services**
 - **Custom Data Collection Services**
 - Can include research design, facilitation, and/or analysis
 - **Research Services**
 - **Data-Related Trainings/Workshops**
-

Cooperative Purchasing



If you want to make a purchase for your library or cultural institution, join over 450 organizations using our Cooperative Purchasing program to save money and time. Our negotiated discounts and streamlined subscription management portal will add dollars to your budget and hours to your day.

Cooperative Purchasing: The Team



Jeff Brunner



Andrea Coffin



Sara Gold



Lisa Marten



**Rebecca
Rosenstiel**



Nick Smith



Cooperative Purchasing: Partnerships



- **Vendor Partners**
- **Controlled Annual Increases**
- **Order Through WiLS**
 - Example: ProQuest
- **Order Direct**
 - Example: Demco

Cooperative Purchasing: Discovery

- **Website**
 - Product Catalog
- **New Business Development**
- **Demos and Taco Tuesday**



Cooperative Purchasing: Management



- **MyWiLS**
- **Resource Discovery**
 - Product Catalog
 - New Business Development
- **Quote Requests**
- **System and District Management**
 - Example: South Central Library System

Cooperative Purchasing: Financials

- **Customized Invoicing**
- **Deposit Accounts**
- **Bill-Pay Services**



Thank you!



Please feel free to unmute to ask questions or use the chat.

If you want to connect with us about any of these services or ideas you have, send us a message at information@wils.org.
